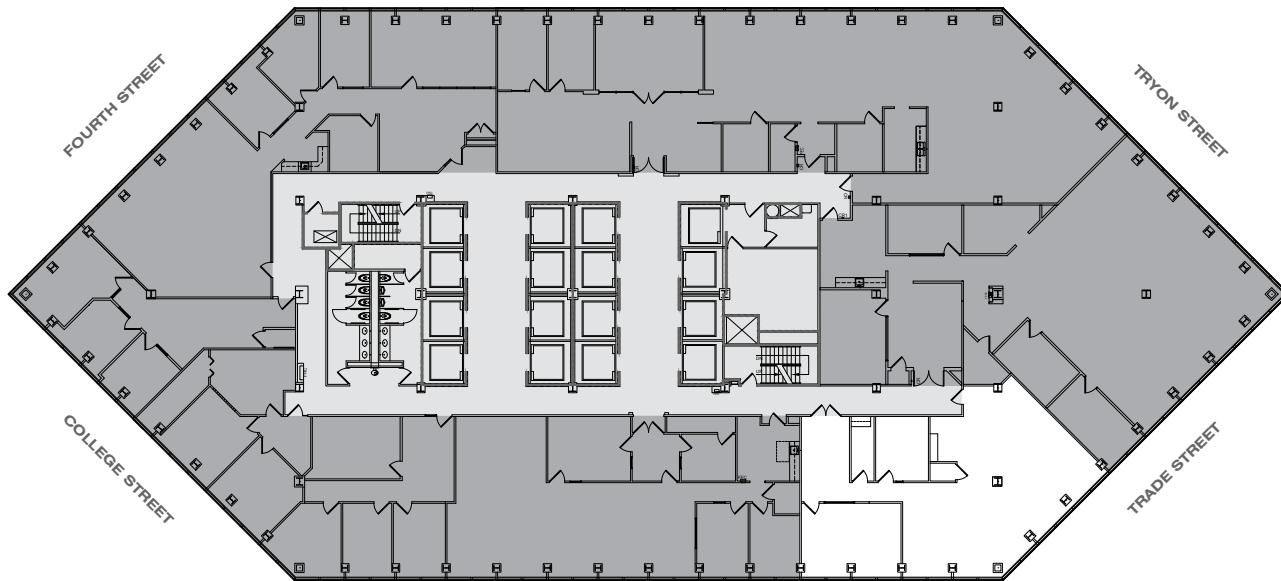





# ONESOUTH

TRADE & TRYON

SPEC SUITE 2410 | 2,252 RSF



-  OCCUPIED
-  UNOCCUPIED
-  CORE

## CONTACT

RHEA GREENE | [rdg@trinity-partners.com](mailto:rdg@trinity-partners.com) | 704.372.8822  
TIM ARNOLD | [tarnold@trinity-partners.com](mailto:tarnold@trinity-partners.com) | 704.295.0404  
JOHN HANNON | [jhannon@trinity-partners.com](mailto:jhannon@trinity-partners.com) | 704.813.7252

leased by

**TRINITY  
PARTNERS**

owned by

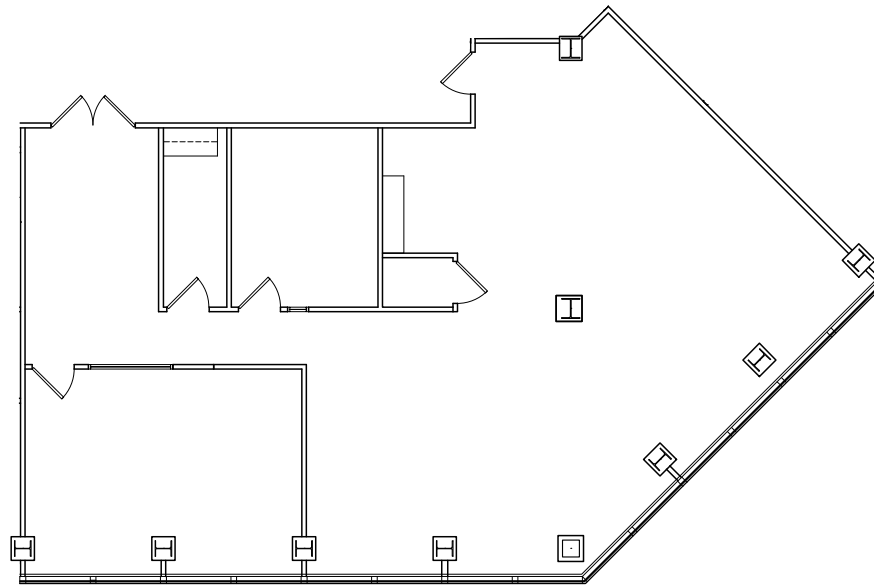
**MONARCH**  
ALTERNATIVE CAPITAL

**Tourmaline**

# ONESOUTH

TRADE & TRYON

SPEC SUITE 2410 | 2,252 RSF



## CONTACT

RHEA GREENE | [rdg@trinity-partners.com](mailto:rdg@trinity-partners.com) | 704.372.8822

TIM ARNOLD | [tarnold@trinity-partners.com](mailto:tarnold@trinity-partners.com) | 704.295.0404

JOHN HANNON | [jhannon@trinity-partners.com](mailto:jhannon@trinity-partners.com) | 704.813.7252

leased by

**TRINITY  
PARTNERS**

owned by

**MONARCH**  
ALTERNATIVE CAPITAL

**Tourmaline**