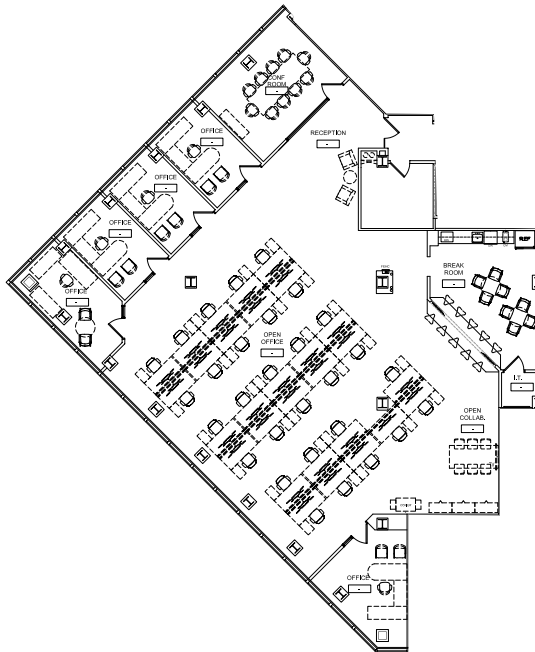


ONESOUTH

TRADE & TRYON

SPEC SUITE 2320 | 5,189 RSF



CONTACT

RHEA GREENE | rdg@trinity-partners.com | 704.372.8822

TIM ARNOLD | tarnold@trinity-partners.com | 704.295.0404

JOHN HANNON | jhannon@trinity-partners.com | 704.813.7252

leased by



owned by

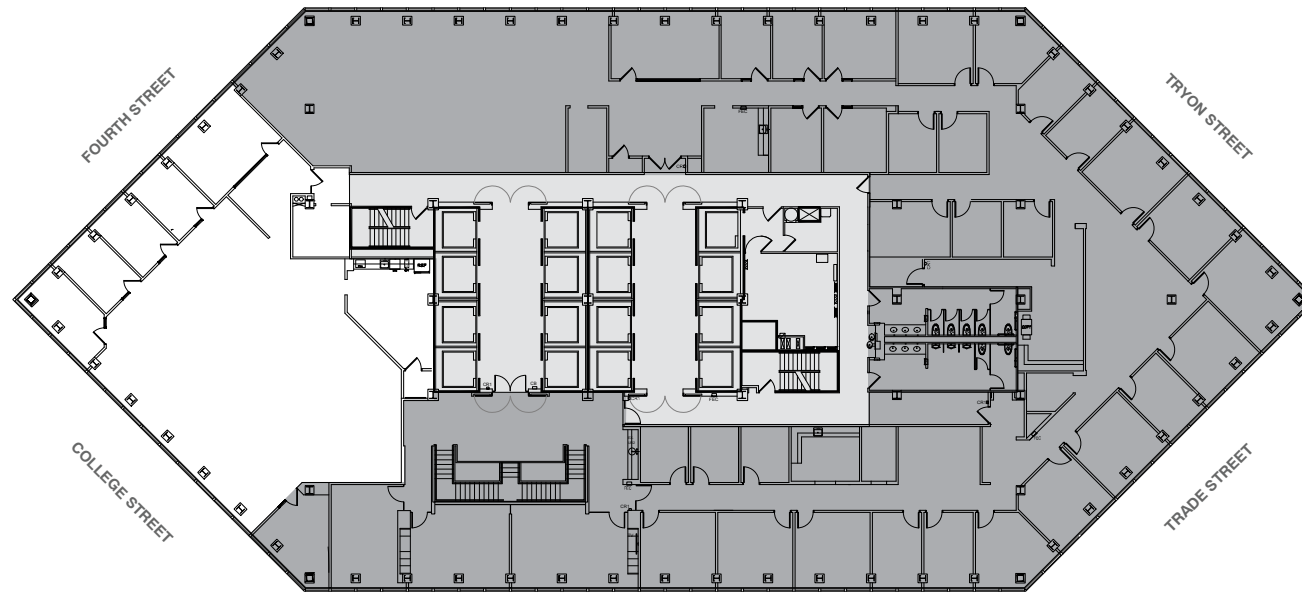
MONARCH
ALTERNATIVE CAPITAL






ONESOUTH

TRADE & TRYON

SPEC SUITE 2320 | 5,189 RSF



-  OCCUPIED
-  UNOCCUPIED
-  CORE

CONTACT

RHEA GREENE | rdg@trinity-partners.com | 704.372.8822
TIM ARNOLD | tarnold@trinity-partners.com | 704.295.0404
JOHN HANNON | jhannon@trinity-partners.com | 704.813.7252

leased by



owned by

