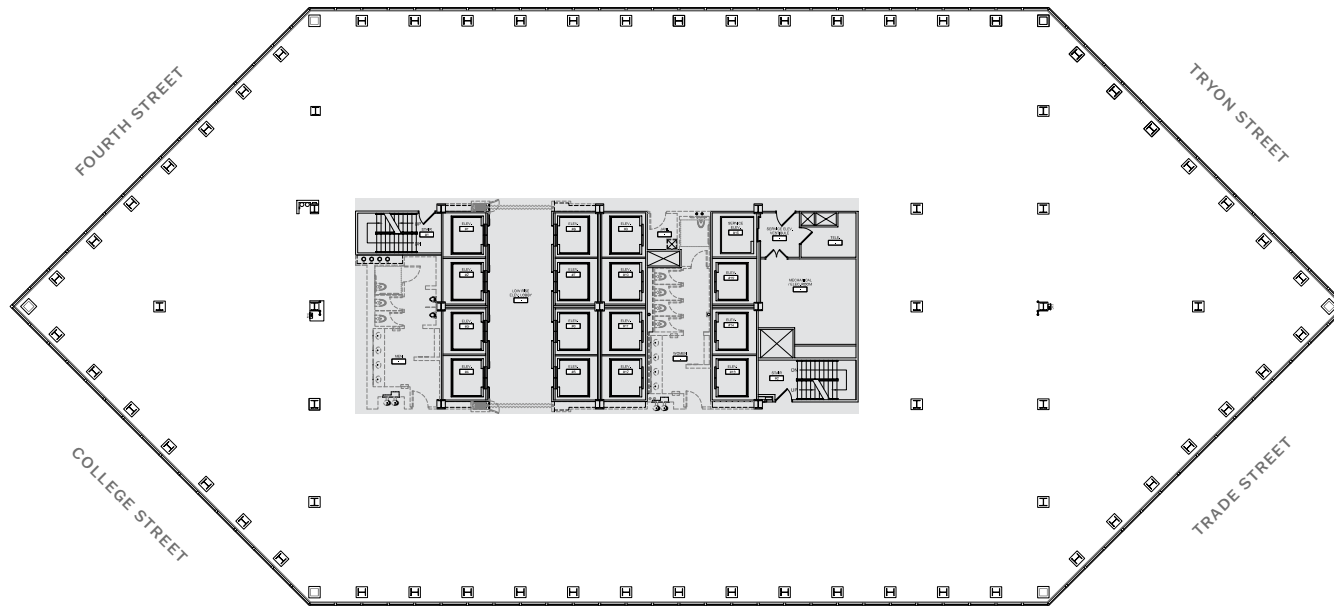


ONESOUTH

TRADE & TRYON

SUITE 1600 | 22,645 RSF



□ UNOCCUPIED
■ CORE

CONTACT

RHEA GREENE | rdg@trinity-partners.com | 704.372.8822
TIM ARNOLD | tarnold@trinity-partners.com | 704.295.0404
JOHN HANNON | jhannon@trinity-partners.com | 704.813.7252

leased by

**TRINITY
PARTNERS**

owned by

MONARCH
ALTERNATIVE CAPITAL

T
TOURMALINE